



Semen Catalog

Bulls Eye Ranch

Registered Brahman Cattle



**CHAROLETTE SMITH
LEE SMITH
DERRICK & KACEY SMITH
COLE & HANNAH SMITH**

Charolette: 979-277-2328
csmith8465@icloud.com
9300 Latium Cemetery Road
Burton, TX 77835
www.bullseyeranch.com

Semen Representatives

QUALITY GENETICS, LLC.
Dr. David Husfeld & Dr. Adriana Serrano
936-878-9996 • info@qualitygenetics.us

GENTIC COSTA RICA
+506-892-49-260
geneticcostarica@gmail.com

SEMEN REP AGRI CLOUD, LLC
+44 79 99 155555
Pakistan ~ Rana Hussain

Embryo Transfer

TRANS OVA
www.transova.com

STGENETICS
www.STgen.com

BRUSHY CREEK SIRES
www.brushycreeksires.com

Semen Storage Locations

**ELGIN BREEDING SERVICE
INTEGRATED GENETICS
BRUSHY CREEK SIRES**

DNA VERIFIED

All of our semen sires and donor females are
DNA verified to ensure 100% accuracy in
pedigree representation

*On the cover is +MR BER 437 "TRUMP"
looking over his son, MR BER ON POINT 23/1*



Bulls Eye Ranch

We have been breeding cattle since 1991, and we believe our bull power has been a cornerstone of our ranch and the success of our breeding program. At BER, our bulls are fertile, functional, and built to add lasting value to any herd. Our goal is simple: we want our customers to be successful.

We are deeply passionate about the Brahman breed. Raising and showing Brahman cattle is a family tradition and something we truly enjoy doing together. We are honored and humbled to be recognized as one of the elite Brahman breeders in the United States and to see the growing demand for our genetics around the world.

Nothing makes us prouder than seeing our customers succeed—both in the U.S. and internationally—with BER genetics. Every day, we continue working to improve our herd through performance data and the highest standards of excellence.



Cole, Charolette & Derrick



Charolette with son Lee



**Cole & Hannah with
Lawson, Levi & Lorraine**



**Derrick & Kacey with
Jaxson, Holden & Lillie**

➤➤➤ +MR BER 427 *Trump*



TWO TIME ABBA PREMIER SHOW BULL OF THE YEAR

As of 2026, +MR BER 427 *Trump* ranks in the top 1% of the breed for Fat Thickness, 15% for \$Queen Index, and 25% for Docility



+ #JADT MEXICANO TE 307/9

SIRE

+ #JADT MEXICANO TE 307/9
(ABBA# B 902188)

{ (+) JDH SIR LAWFORD MANSO 616/6
{ (JADL PENELOPE TE 57/3)

{ (+) JDH MADISON DE MANSO 737/4
{ JDH LADY BARA MANSO 162/5
{ (+) JDH SIR MARRI MANSO 557/4
{ (JERS 148 TE 148)

DAM

+ JDH GOUDEAU MANSO 130/0
(ABBA# C 892640)

{ JDH MR MANSO 19/5
{ JDH LADY MANSO 978/1

{ (+) JDH ATLAS MANSO 328/3
{ + JDH LADY MANSO 367/3
{ (=) JDH WINCHESTER MANSO 36/1
{ JDH LADY MANSO 514/8F



+ JDH GOUDEAU MANSO 130/0

+Mr BER 427 *Trump* is the cornerstone of our breeding program and the undisputed leader in our semen lineup, with genetics in demand around the world. He is one of the most sought-after Gray Brahman bulls internationally and has already sired multiple champions across the globe. *Trump* was named the 2017 ABBA National Champion Gray Brahman Bull and is a **TWO TIME ABBA PREMIER SHOW BULL OF THE YEAR** and he continues to prove his value as a sire.

Highlights of his progeny champions include from 2021 the National Grand Champion Get-of-Sire and National Calf Champion; from 2022 the Cattleman's Congress Grand Champion and a International HLS&R Reserve Calf Champion; from 2023 a International HLS&R Reserve Junior Champion and a National Senior Champion; from 2024 one Champion and two Reserve Champions at San Antonio Livestock Show; from 2025 the AJBA ALL American Grand Champion Bull. These are just a few of his MANY champion progeny which further validates and solidifies his impact on the breed.

He is backed by an elite maternal line, being out of +JDH Goudeau Manso 130/0, one of the TOP ABBA Register of Renown Gray Females—a pedigree that speaks volumes about consistency, quality, and longevity. Phenotypically, Trump is as impressive as his record suggests. He is powerful yet athletic, moving effortlessly "like a cat," with tremendous depth of body, natural volume, and eye-catching style. He combines power, balance, and functionality in a package that continues to elevate herds worldwide.



+*JBR MR 07/4 TE



**SIRE OF MULTIPLE CHAMPIONS,
ACROSS THE GLOBE**

As of 2026, +*JBR MR 07/4 TE ranks in the top 5% of the breed for Carcass Weight, 10% for Ribeye Area and Yearling Weight, 15% for \$Bull Index, 25% for Weaning Weight,

+JBR MR 07/4 PROGENY



MR BER WASHINGTON 546

2019 FORT WORTH STOCK SHOW RESERVE CALF CHAMPION



MR SNS KODAK 454/1

2023 STATE FAIR OF TEXAS GRAND CHAMPION

SIRE JDH WELLINGTON MANSO 527/1
(ABBA# B 864762)

{ JDH MR. ECHO MANSO 237/1
{ JDH LADY ARIA MANSO 668/5

DAM (LCHS-TIZIMILENA TE 22/03)
(ABBA# C 9008869)

{ (+)JDH SIR MARRI MANSO 557/4
{ (JERS-50 1A)

{ (+)JDH SIR LIBERTY MANSO 847/5
{ =JDH MADDIE REM MANSO 28/1
{ (+)JDH REMINGTON MANSO 784/2
{ =JDH LADY TARI MANSO 783/4
{ JDH DOMINO MANSO 42/4
{ JDH QUEEN LILA MANSO 363/2
{ (+)JDH MADISON DE MANSO 737/4
{ (JERS-RUBI 124)

When you see # +JBR MR 07/4 in person, he will truly amaze you. He is without question one of the most powerful bulls in the lineup, combining tremendous depth of body with exceptional length and natural mass. In addition to his power and performance, he possesses a very good disposition, making him as functional as he is impressive.

During my travels throughout Central and South America, I consistently observed that JDH WELLINGTON MANSO 527/1 adds more meat and muscle to his progeny than any other bull I encountered. His calves dominated in Colombia and throughout other countries, firmly establishing his reputation as a true power sire. That influence is clearly evident in this bull.

His pedigree reads like a Who's Who of the Brahman breed. On the top side, he traces to JDH MR. ECHO MANSO 237/1, (+)JDH SIR LIBERTY MANSO 847/5, and (+)JDH REMINGTON MANSO 784/2. The bottom side is equally impressive, featuring (+)JDH SIR MARRI MANSO 557/4, JDH DOMINO MANSO 42/4, and (+)JDH MADISON DE MANSO 737/4. This is truly a royal bloodline—one that is nearly impossible to improve upon.

Performance has already been validated by his pedigree. His first calf crop produced champions and he has continued to produce champions for our ranch and our customer's ranches both in the USA and internationally. This is a truly special sire, and one I believe will leave a lasting, positive impact on the Brahman breed.



+MR. BER CASH 336



SIRE OF THE 2022 INTERNATIONAL GRAND CHAMPION RED BULL

As of 2026, +MR BER *Cash* 336 ranks in the top 2% of the breed for Fat Thickness, 20% for \$Queen Index, and 30% for \$Bull Index, CED and Birth Weight



MR. BER 272

SIRE MR. BER 272
(ABBA# B 880625)

#GZL MAGO LAESCONDIDA190 190/1
+MISS V8 980/5

{ (+) JDH MADISON DE MANSO 737/4
MISS LL RHA ELY MANSO 620/8
JDH MR. MANSO 288/1
MIS HCC 612/6
+MR. V8 789/4
JDH LADY ESPINO MANSO 578/6
{ (+) JDH SIR LIBERTY MANSO 847/5
JDH MISS ACACIA MANSO 237/6

DAM +JDH LADY ROSA MANSO 845/7
(ABBA# C 887200)

{ JDH SIR GATES DE MANSO 480/7
JDH LADY ALLISON MANSO 710/6



+JDH LADY ROSA MANSO 845/7

+Mr. BER *Cash* 336 is one of the leading sires influencing the Brahman breed today, excelling both in the show ring and on the performance side. His progeny have proven their value in scanning contests, posting high retail product yields and excellent marbling, demonstrating that Cash combines phenotype with real-world carcass merit. He is the sire of the 2022 International Grand Champion Red Brahman Bull and has produced champions in both the red and gray divisions.

Cash is the kind of sire that consistently produces champions out of a wide variety of cow families, a true mark of a great breeding bull. His calves are instantly recognizable, coming with a distinctive look, exceptional bone, and natural muscle from birth. He has already sired multiple champions around the world, further cementing his reputation as a true breed improver.

At BER, we continue to linebreed and build around this powerful cow family. We are currently using his sire, Mr. BER 272, in our embryo program, and we have calves by *Cash* and Mr. BER 272 in our show string — a testament to the confidence we have in this genetic line.

Cash is backed by an outstanding dam, JDH Lady Rosa Manso 845/7, one of our very best producers of show cattle. With a prestigious pedigree anchored by powerful cow families, +Mr. BER *Cash* 336 offers a rare combination of show-ring dominance, carcass performance, and genetic consistency.



MR BER ON POINT 23/1



CSS SEMEN
AVAILABLE WORLDWIDE

MULTI-TIME GRAND CHAMPION BULL TAKING GRAND CHAMPIONSHIPS AT 2024 WORLD BRAHMAN CONGRESS JUNIOR SHOW, 2025 AJBA ALL AMERICAN SHOW, 2025 BLUEBONNET KICK OFF CLASS AND MANY MORE!

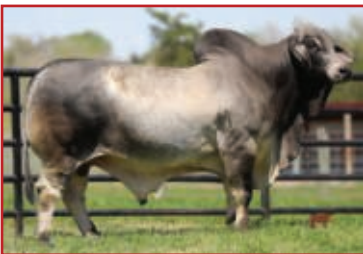


+MR BER 427 "TRUMP"
SIRE OF MR BER ON POINT 23/1

SIRE **+MR BER 427 Trump**
(ABBA# 945942)

+ #JADT MEXICANO TE 307/9
+ JDH GOUDEAU MANSO 130/0

(+) JDH SIR LAWFORD MANSO 616/6
(JADL PENELOPE TE 57/3)
JDH MR MANSO 19/5
JDH LADY MANSO 978/1



***DAC MR COPOSO CROWN 16/6**
MATERNAL GRANDSIRE OF MR BER ON POINT 23/1

DAM **MISS BER JOLENE 754**
(ABBA# 1029573)

*DAC MR COPOSO CROWN TE 16/6
#GSF LINA TE 585/4

+ JDH SIR CORONA MANSO 369/7
(RAB-MISS VIKI 178/6)
JDH SIR WINSTON MANSO 985/6
(JADL KENIA TE)55/3

MR BER ON POINT 23/1 is a performance-oriented herd sire prospect backed by generations of proven BER genetics. We collected ON POINT in 2025 and were extremely impressed with the quality of his semen at such a young age — something that comes as no surprise, as BER cattle are widely known for fertility, early maturity, and reproductive consistency. He currently has CSS semen available, and we are excited to offer semen while he continues his show career. ON POINT has consistently impressed judges across a wide range of competition, earning championships nearly every time he has entered the arena.

His sire, +MR BER 427 TRUMP, has established himself as both a show ring standout and a proven performance sire. TRUMP has built a reputation as a reliable producer of carcass merit, muscle expression, and structural quality, while also siring championship-caliber cattle across the globe. TRUMP offspring are known for their ability to compete successfully in the show arena while maintaining the phenotype, structural integrity, and breed character expected from elite Brahman genetics.

The bottom side of ON POINT's pedigree is equally impressive. His dam, MISS BER JOLENE 754, is a daughter of DAC MR COPOSO CROWN TE 16/6, who is sired by the great +JDH SIR CORONA MANSO 369/7. She stems from a cow family known for consistency, productivity, and longevity. This maternal influence contributes added body capacity, muscle shape, and the kind of functional design that translates into long-term herd value and dependable replacement females.

MR BER ON POINT 23/1 is built to add real-world value — offering muscle, carcass quality, maternal strength, fertility, and structural integrity in a single, balanced breeding package.



MR BER BRUNO 855



+MR. V8 670/6 ranks in the top 10% of the breed for Yearling Weight and Tenderness, 15% for Weaning Weight and Scrotal Circumference

PROGENY



MR BER TEXAS CHROME 157/1
2026 ABBA WINTER CLASSIC CALF CHAMPION
2026 HEART OF TEXAS RESERVE CALF CHAMPION



+ JDH SIR LEON MANSO 776/6
SIRE OF MR BER BRUNO 855

SIRE **+JDH SIR LEON MANSO 776/6**
(ABBA# 929911)

{ JDH HAWK MANSO 666/5
{ JDH LADY MANSO 427/5

DAM ***GSF CEREZA TE 646/5**
(ABBA# 966534)

{ JDH WELLINGTON MANSO 527/1
{ (GSF- ARMONIA 529 TE)

{ JDH SALTILLO MANSO 260/4
{ +JDH LADY MANSO 930/2
{ JDH SPANKY MANSO 317/4
{ JDH LADY MANSO 437/4
{ JDH MR. ECHO MANSO 237/1
{ JDH LADY ARIA MANSO 668/5
{ (+)JDH KARU MANSO 800
{ (JADL SANTA FE T.E. 83/4)

MR BER BRUNO 855 is backed by generations of proven performance and maternal genetics that align with the BER breeding philosophy of producing cattle that are functional, fertile, and built for longevity. He is sired by +JDH SIR LEON MANSO 776/6, a sire recognized for transmitting muscle, structural integrity, and performance consistency. I was fortunate to obtain semen on +JDH SIR LEON MANSO 776/6 through a charity auction, as semen from this sire is not available in the United States. +JDH SIR LEON MANSO 776/6 has produced a large number of champions, and progeny from this line are known for their ability to perform in real-world production environments while maintaining the phenotype and breed character expected from quality Brahman cattle.

The maternal side of MR BER BRUNO 855 adds another layer of production reliability. His dam, GSF CEREZA TE 646/5, is a daughter of JDH WELLINGTON MANSO 527/1 and comes from a cow family known for productivity, body capacity, and longevity in the pasture. This maternal influence contributes strength, rib shape, and the functional design needed to build productive, efficient cow herds.

While MR BER BRUNO 855 is designed to add muscle, performance, maternal value, and structural soundness in a balanced and predictable package, he is also proving himself in the show arena as a sire. His first calf to show has already reached the championship backdrop in its first two show outings — an early indicator of the consistency and quality he is capable of producing.



MR BER BULLET 820



**2022 ABBA INTERNATIONAL
RESERVE CALF CHAMPION**

As of 2026, MR BER BULLET 820 ranks in the top 1% of the breed for Fat Thickness, 10% for \$Queen Index and Docility, 15% for Scrotal Circumference, 25% for Carcass Weight, 30% for Tenderness and \$Bull Index



+MR BER 427 TRUMP

SIRE **+MR BER 427 Trump**
(ABBA# B 945842)

{ **+#JADT MEXICANO TE 307/9**
{ **+JDH GOUDEAU MANSO 130/0**

{ **(+)JDH SIR LAWFORD MANSO 616/6**
{ **(JADL PENELOPE TE) 57/3**
{ **JDH MR MANSO 19/5**
{ **JDH LADY MANSO 978/1**

DAM **+SRS MISS BELLA 466/8 (S)**
(ABBA# C 993972)

{ **+MR. V8 458/7 NOBLE**
{ **MISS RB 633/3**

{ **+JDH MR ELMO MANSO 309/4**
{ **MISS V8 100/7 (P)**
{ **+#JADL REY TE 110**
{ **+WR MS MARTI SID 071**



+SRS MISS BELLA 466/8 (S)

MR BER BULLET 820 is an extremely powerful and correct bull, combining structural soundness with ideal feet and legs, excellent hump placement, and a smooth, fluid stride. We are very excited about using BULLET in our breeding program, as he is an early-maturing sire who passed his semen test at just 18 months of age, further emphasizing his fertility and functionality.

BULLET is backed by an outstanding and highly sought-after pedigree. He is a direct son of +MR BER 427 TRUMP, our two-time ABBA Premier Show Bull of the Year, and his dam is a +MR. V8 458/7 "NOBLE" daughter, giving him a genetic package that blends some of the most respected and proven bloodlines in the breed. He truly carries one of the most elite pedigrees available today.

In the show ring, MR BER BULLET 820 was a consistent winner, starting his show career with a prestigious win as ABBA International Reserve Calf Champion at HLS&R, and then continuing on to earn multiple championships and Grand Championships at ABBA-recognized shows. He is also backed by some of the best EPDs in the breed, making him a rare combination of phenotype, performance, and genetic predictability.

With his power, correctness, fertility, and pedigree, MR BER BULLET 820 is the kind of herd sire that can positively impact any program and help shape the future of a progressive Brahman breeding operation.



MR BER WASHINGTON 546



**PART OF THE INTERNATIONAL
2020 PRODUCE CHAMPIONSHIP**

CO-OWNED WITH 4R RANCH

As of 2026, MR BER WASHINGTON 546 ranks in the top 10% of the breed for Calving Ease Direct, 15% for Yearling Weight, Carcass Weight and Ribeye Area, 20% for Weaning Weight and Calving Ease Maternal



+*JBR MR 07/4 TE

SIRE **+*JBR MR 07/4 TE**
(ABBA# B 954962)

JDH WELLINGTON MANSO 527/1
(LCHS-TIZIMILENA TE) 22/03

JDH MR. ECHO MANSO 237/1
JDH LADY ARIA MANSO 668/5
(+*)JDH SIR MARRI MANSO 557/4
(JERS-50 IA) 50

DAM **+MISS BER PRINCESS 277**
(ABBA# C 887871)

MR. V8 363/6
+MISS BER 218

+MR. V8 287/5
+MISS V8 69/6
+MR. V8 846/5
+BNA MISS NEL MANSO 234/9



+MISS BER PRINCESS 277

MR. BER WASHINGTON 546 is truly the complete package. He combines big bone with correct feet and legs, excellent hump placement, a long, attractive body, a good sheath, and outstanding breed character. We have progeny on the ground by WASHINGTON, and we are extremely impressed with the quality, consistency, and overall look of his offspring. They have taken the show arena by storm, as he has already produced multiple champions from his very first calf crops.

WASHINGTON is backed by an exceptional pedigree. His dam, +MISS BER PRINCESS 277, was one of our top donors at BER and is a proven producer, having garnered the impressive Grand Champion Natural Produce of Dam at the 2020 ABBA International Show at HLS&R, as well as the Reserve Grand Champion Natural Produce of Dam at the 2020 ABBA National Show. WASHINGTON carries an outstanding genetic package that includes seven Vanguard Sires, 22 ABBA Register of Renown animals, and four Maternal Merit females in his extended pedigree, further solidifying the genetic strength and fertility behind him.

His sire, +*JBR MR 07/4, a JDH WELLINGTON MANSO 527/1 son, has been a tremendous and reliable producer for us at BER. With performance, phenotype, and proven maternal power stacked generation after generation, MR. BER WASHINGTON 546 stands out as a bull built to make a lasting impact in any progressive Brahman breeding program.



*ANLDSR WISKY FIV 269/5



SIRE OF ABBA INTERNATIONAL RESERVE INTERMEDIATE CHAMPION

As of 2026, *ANLDSR WISKY FIV 269/5 ranks in the top 10% of the breed for Scrotal Circumference, 15% for Tenderness, 20% for \$Queen Index, Marbling, and Calving Ease Maternal

WISKY 269/5 PROGENY



MR BER JAMES MONROE 723

2022 ABBA INTERNATIONAL RESERVE INTERMEDIATE CHAMPION



MISS BER IVY

ALL AMERICAN YEARLING CHAMPION

SIRE

(+)JDH SIR LAWFORD MANSO 616/6
(ABBA# B 803613)

{ (+)JDH MADISON DE MANSO 737/4
JDH LADY BARA MANSO 162/5

{ (+)MR. V8 202/3
+JDH LADY REM J MANSO 2 692/3
JDH PONCHO DE MANSO 874/4
JDH AUNTIE M MANSO 638/4

DAM

(LCH PATTY T.E. 16/03)
(ABBA# C 9009250)

{ (+)JDH KARU MANSO 800
(JERS - 69 TE)

{ (+)JDH DAKOTA MANSO 599
JDH LADY REM S. MANSO 707
+MR INTERNATIONAL 50/1
(JERS 142 TE)

WISKY FIV 269/5 is one of those bulls that immediately stands out when you see him. He is simply a beautiful bull with that rare, special look that catches your eye. One of the top genetics on my list to own was a son of (+)JDH SIR LAWFORD MANSO 616/6, and when I saw WISKY FIV 269/5 at a show, I knew he was the one.

WISKY FIV 269/5 is moderate and beefy bull, combining style with an impressive look that truly sets him apart. He also has one of the best dispositions of all the bulls we own, making him extremely easy to work with.

He brings a tremendous amount to the table—ample bone, a clean front end, plenty of power and performance, excellent spring of rib, a clean underline, and exceptional width across his topline. These traits make him a functional, eye-appealing bull that fits today's Brahman industry.

From WISKY FIV 269/5's very first calf crop I was quite impressed. The more calves we got on the ground, the more I knew that it was a good decision to invest in this outstanding bull. He has sired a International Reserve Division Champion for the ranch and we encourage you to stop by the ranch and see firsthand how his genetics are positively impacting our Brahman herd at Bulls Eye Ranch.



#LCHS MR PAQUIAN TE 95/5



**SIRE OF 2024 ABBA
NATIONAL CALF CHAMPION**

As of 2026, #LCHS MR PAQUIAN TE 95/5 ranks in the top 2% of the breed for Fat Thickness, 10% for Calving Ease Maternal and Total Maternal, 15% for Milk



(+)JDH WOODSON DE MANSO 206/7
2007 HOUSTON INTERNATIONAL GRAND CHAMPION



MISS BER PAISLEY 75/1
2024 ABBA NATIONAL SHOW CALF CHAMPION FEMALE

PROGENY

SIRE

(+)JDH WOODSON DE MANSO 206/7
(ABBA# B 839863)

{ (+)JDH MR WOODMAN MANSO 578/6
{ (+)JDH LADY IRMA MANSO 484/6

{ (+)JDH SIR LIBERTY MANSO 847/5
{ JDH LADY NELDA MANSO 485/5
{ (-)JDH PRESCOT MANSO 82/6
{ JDH LADY CORA MANSO 339/5

DAM

(LCHS MISS CHATA TE 36)
(ABBA# C 9007838)

{ +JDH MR. UNION MANSO 455/3
{ (LCHS GORDA TE 10/1)

{ JDH ODYSSEY MANSO 479/2
{ +JDH MISSY MICHELLE MNSO 609/2
{ +MR. V8 777/4
{ (JERS 142 TE)

As I have traveled throughout Central and South America evaluating Brahman cattle, one thing I consistently noticed was the progeny of (+)JDH WOODSON DE MANSO 206/7. His offspring are uniformly stylish, carrying ample bone and muscle, and his genetics are highly sought after worldwide. For that reason, he was a sire I knew I wanted to incorporate into our breeding program at Bulls Eye Ranch.

LCHS MR PAQUIAN 95/5 is an outstanding bull that immediately catches your eye. He is smooth made with excellent lines and a presence that makes you take a second look. He has tremendous length of body, stands on correct feet and legs, and carries his muscle down low. LCHS MR PAQUIAN 95/5 combines a strong, expressive muscle pattern with a clean front end, making him a well-balanced and functional herd sire prospect.

LCHS MR PAQUIAN 95/5 has exceptional potential as a female producer, as he is out of a +JDH MR. UNION MANSO 455/3 daughter—a pedigree known for maternal strength and consistency, and he has already produced females that are winning in the USA as well as globally. If you are looking to add style, muscle, and functionality to your herd, then this bull truly checks all the boxes.



MR BER 391 *Princeton*



2017 ABBA INTERNATIONAL RESERVE JUNIOR CHAMPION

As of 2026, MR BER 391 *Princeton* ranks in the top 10% of the breed for Carcass Weight and \$Bull Index, 15% for Ribeye Area, and 30% for Marbling



+MR. V8 670/6 (ET)

SIRE **+MR. V8 670/6 (ET)**
(ABBA# B 872229)

+MR. V8 203/6
+MISS V8 143/6

+JDH CHARLEY'S JAZZ 946/1
MISS V8 189/5
+MR. V8 287/5
+MISS V8 606/5

DAM **+JDH LADY ROSA MANSO 845/7**
(ABBA# C 887200)

JDH SIR GATES DE MANSO 480/7
JDH LADY ALLISON MANSO 710/6

+MR. V8 789/4
JDH LADY ESPINO MANSO 578/6
(+) JDH SIR LIBERTY MANSO 847/5
JDH MISS ACACIA MANSO 237/6



+JDH LADY ROSA MANSO 845/7

Princeton is a stylish, well-balanced bull that combines eye appeal with real-world functionality. He is pretty fronted with smooth shoulders, excellent hump placement, a clean sheath, and plenty of bone and muscle through his rib and stifle. These structural advantages helped him earn fourth place overall in the 2017–2018 ABBA Premier Show Bull of the Year standings, despite only being shown for half of the season.

More importantly, *Princeton* has proven himself where it counts most—as a herd sire. Our embryo calves by Princeton are moderate at birth, consistently weighing around 60 pounds, and they uniformly exhibit the same attractive look, balance, and style as their sire. His offspring are performing extremely well for our customers, and the feedback has been overwhelmingly positive.

Princeton is backed by one of the strongest cow families in our program. He is out of our famous +JDH Lady Rosa Manso 845/7, a proven donor and elite bull producer who is also the dam of +MR. BER CASH 336, who was inducted into the 2018 ABBA Register of Renown as the second-highest point-producing sire that year. His sire, +MR. V8 670/6, has excelled both in the show ring and in production, earning the title of 2015 ABBA Carcass Contest Champion while consistently siring champions.

With an outstanding extended pedigree that includes 27 Register of Renown animals and 14 Vanguard sires, *Princeton* represents the modern Brahman bull—combining phenotype, performance, and pedigree. Backed by a great sire and an elite dam, you simply can't go wrong with *Princeton* semen.



#ANLDSR PABLO 25/4



SIRE OF 2017 ABBA NATIONAL RESERVE CALF CHAMPION

As of 2026, #ANLDSR PABLO 25/4 ranks in the top 10% of the breed for Marbling, 20% for Ribeye Area, and 25% for Carcass Weight and \$Bull Index

PABLO 25/4 PROGENY



MISS BER LOUETTA 482
2017 ABBA NATIONAL SHOW RESERVE CALF CHAMPION



MR BER JUSTIFY 506
2018 ABBA NATIONAL SHOW CALF CHAMPION BULL

SIRE JDH SIR PAUL MANSO 463/1
(ABBA# B 855077)

{ (+)JDH SIR LAWFORD MANSO 616/6
JDH LADY BRITTON MANSO 351/1

{ (+)JDH MADISON DE MANSO 737/4
JDH LADY BARA MANSO 162/5
{ (+)JDH SIR LIBERTY MANSO 847/5
JDH CHIRENO MANSO 952

DAM (LCHS BAILARINA TE 8/1)
(ABBA# C 9007715)

{ +MR. V8 777/4
{ (JERS 142 TE)

{ +MR. V8 702/3
{ +MISS V8 666/3
{ JDH STERLING MANSO 31/1
{ (JERS REYNA 95)

PABLO is an outstanding JDH SIR PAUL MANSO 463/1 son, a LAWFORD son out of a LIBERTY daughter, giving him a powerful and time-tested sire line. On the dam side, he is backed by +MR. V8 777/4 "POWERSTROKE" and JDH STERLING MANSO 31/1, completing a truly tremendous and proven pedigree. PABLO was the first bull we ever purchased from Agropecuaria NL Ranch in Mexico, and he made an immediate impression. When we first saw him, he was a Division Champion at the Mexico National Cebu Show, and he has continued to justify that early acclaim. He is a larger-framed bull with a clean sheath, excellent depth of body, and tremendous length. He stands on very good feet and legs and combines power with balance and correctness. We have used PABLO extensively in our IVF program with excellent results. His calves are born light, typically 52–71 pounds, yet they grow fast and develop into cattle with lots of muscle, volume, and a clean, attractive look.

PABLO has already proven himself as a sire of champions. In the 2017 show season, he produced MISS BER 469, who was Calf Champion at multiple major ABBA Shows and she also placed second in a very competitive class at the 2017 ABBA National Show, where her paternal sister, MISS BER 482, was crowned ABBA National Reserve Calf Champion. He is also the sire of MR. BER JUSTIFY 506, the 2018 ABBA National Calf Champion Bull, further proving his ability to consistently produce elite show cattle.

We have sold semen rights to one of the top breeders in Australia on this bull, so you truly can't go wrong when breeding to PABLO — a proven sire that delivers muscle, performance, eye appeal, and champions.



*DAC MR COPOSO CROWN TE 16/6



**SIRE OF MULTIPLE CHAMPIONS,
ACROSS THE GLOBE**

**As of 2026, *DAC MR COPOSO CROWN TE 16/6 ranks in the top
3% of the breed for Birth Weight and 20% for Fat Thickness**

16/6 PROGENY



MISS BER LUNA 753

2022 GRAND CHAMPION FLORIDA STATE FAIR & KISSIMMEE FAIR



**MISS BER 450 Sired by +MR. BER CASH 336
CALF AT SIDE Sired by *DAC MR COPOSO CROWN TE 16/6
2019 Fort Worth Stock Show Grand Champion Female**

SIRE

+JDH SIR CORONA MANSO 369/7
(ABBA# B 846B11)

{ (+)JDH SIR LAWFORD MANSO 616/6
JDH LADY VADO MANSO 751/5

{ (+)JDH MADISON DE MANSO 737/4
JDH LADY BARA MANSO 162/5
JDH BAXTER MANSO 188/5
JDH MS NEVADO MANSO 889/3

DAM

(RAB-MISS VIKI 178/6)
(ABBA# C 9008829)

{ (RAB-MR ACOSTA COPOSO 519/1)
(RAB-MISS CRATA 845/2)

{ JDH ACOSTA MANSO 369
(RAB-ANAKARLA 634/5)
(RAB-MR VIC CRATA 185/9)
(RAB-MISS SEVEN VULCANA 15/8)

If you are looking for a true cattleman's kind of bull, look no further than COPOSO CROWN 16/6. He is a moderate-framed bull with an impressive amount of muscle and natural thickness. He is pretty fronted with a good head and exceptionally smooth shoulders, giving him a clean, correct appearance from the ground up. COPOSO CROWN 16/6 moves with ease and truly floats across the ground, thanks to his excellent set of feet and legs. Cattlemen will appreciate that he carries his muscle all the way down to the ground and maintains a very good sheath. His length of body, matched with tremendous depth, makes him a functional, productive bull that fits a wide range of breeding programs. He also excels in breed character, displaying dark pigmentation, black ears, and a dark scrotum—traits that remain highly valued by Brahman breeders. COPOSO CROWN 16/6 is backed by royal genetics, being sired by +JDH SIR LAWFORD MANSO 616/6, a son of the legendary (+) JDH SIR LAWFORD MANSO 616/6. I am confident COPOSO CROWN 16/6, a past Mexico National Division Champion, will make a tremendous addition to any breeder's AI or ET program, and his moderation, structure, and calving ease also make him an excellent choice for breeding heifers.



+MR. V8 670/6 (ET)



**CHAMPION SIRE OF THE 2015
ABBA CARCASS PROGRAM**

As of 2026, +MR. V8 670/6 ranks in the top 10% of the breed for CED, Scrotal Circumference, Carcass Weight, Rideye Area, 20% for Tenderness, Marbling, \$Bull Index, and Milk

+MR. V8 670/6 PROGENY



MISS BER 124/1
2025 USA NATIONAL JR. SHOW RESERVE GRAND CHAMPION
2025 USA NATIONAL OPEN SHOW RESERVE JR. YEARLING



MR DOUBLE A 176/1
2019 ABBA NATIONAL RESERVE JUNIOR CHAMPION

SIRE +MR. V8 203/6
(ABBA# B 844939)

+JDH CHARLEY'S JAZZ 946/1
MISS V8 189/5

- { (+)JDH MR. CHARLEY MANSO 590/6
- { +JDH LADY MANSO 76/1
- { (+)JJ DIDOR CRATA 389
- { +MISS V8 165/4
- { +MR. V8 777/4
- { +MISS V8 611/4
- { (=)JDH SIR ALEXO MANSO 24/4
- { +MISS V8 571/3

DAM +MISS V8 143/6
(ABBA# C 820771)

+MR. V8 287/5
+MISS V8 606/5

+MR. V8 670/6 is loaded with muscle and volume and has made a tremendous impact on our Brahman herd. Not only has he produced numerous champions, but he was also named Champion and Overall High Indexing Sire in the 2015 ABBA Carcass Evaluation Program, further proving his ability to combine phenotype with performance. In the show ring, +MR. V8 670/6 continued to separate himself from the pack. He ranked as the #2 Top Producing Gray Sire on the 2017 ABBA Show Circuit and placed #5 on a five-year average, confirming his consistency and longevity as a sire. His calves are noted for low birth weights and outstanding growth, posting strong weaning and yearling weights while maintaining structural correctness and eye appeal. His pedigree is truly second to none. On the top side, he traces to +JDH CHARLEY'S JAZZ 946/1, while the dam side features the legendary +MISS V8 143/6, an International and National Champion whose influence continues to shape the breed. Altogether, his extended pedigree boasts an impressive 30 Register of Renown animals, along with 8 Vanguard sires, one Vanguard female and one Maternal Performance Sire. Simply put, we cannot say enough good about +MR. V8 670/6 and all that he offers. He is a complete genetic package—power, performance, pedigree, and predictability—making him an invaluable addition to any progressive Brahman breeding program.



BER 252 (ET)



**POWERHOUSE BULL WITH
TREMENDOUS LENGTH**

As of 2026, BER 252 (ET) ranks in the top 5% of the breed for Fat Thickness, 10% for Calving Ease Direct, and 15% for Marbling

MR BER 252 PROGENY



MISS BER CLASSY 293
2013 AJBA ALL-AMERICAN RES. GRAND CHAMPION



+ MISS BER 308 "PEARL"
2013 AJBA ALL-AMERICAN RESERVE JUNIOR CHAMPION
2023 INTERNATIONAL RESERVE GRAND CHAMPION
EMBRYO PRODUCE OF DAM

SIRE #SMG. MONUMENTAL 74/0
(ABBA# B 805410)

{ (+)JDH SIR LIBERTY MANSO 847/5
{ (CLORA 41/1)

{ JDH MR BRAHMAN MANSO 175/5
{ +JDH LADY REMINGTON MANS 194/4
{ (EME. BOZITO MANSO 4315)
{ (SMG. CLORA 16/5)

DAM +MISS V8 980/5
(ABBA# C 802901)

{ JDH MR. MANSO 288/1
{ MIS HCC 612/6

{ (+)JDH DAKOTA MANSO 599
{ =JDH LDY OLGA DE MANSO 537/7
{ MR. V8 310/4
{ MISS HCC 274/3

BER 252 (ET) is a powerhouse bull that combines tremendous length of body, structural soundness, great feet and legs, and an exceptional amount of muscle and volume. He is built right and loaded with performance and substance from end to end.

BER 252 (ET) comes from an outstanding genetic package, being a (+)JDH SIR LIBERTY MANSO 847/5 grandson and out of the great +MISS V8 980/5.

+MISS V8 980/5 is a proven producer, having raised two herd sires for our ranch and multiple champions, making her one of the most influential females in the pedigree. She is the dam of the 2017 ABBA National Brahman Show Reserve Senior Champion Gray Female and the 2016 Houston International Show Reserve Calf Champion Gray Female. She is sired by JDH MR. MANSO 288/1, a bull widely recognized as a producer of exceptional females.

BER 252 made an immediate impact on our herd, as his first calf crop produced multiple champions for our ranch, and we are confident he will do the same for you. With his power, pedigree, and proven ability to sire winners, BER 252 (ET) is the kind of bull that can elevate any progressive Brahman breeding program.



MR. BER 272



**SIRE OF
+MR. BER CASH 336**

As of 2026, MR. BER 272 ranks in the top 15% of the breed for Marbling, 30% and Calving Ease Direct, and 35% for Birth Weight and \$Bull Index

MR BER 272 PROGENY



+MR. BER CASH 336

SIRE OF 2022 ABBA INTERNATIONAL GRAND CHAMPION RED BULL



MISS BER 386 "GRETA"

DAM OF A 2024 ABBA NATIONAL RESERVE DIVISION CHAMPION

SIRE #GZL MAGO LAESCONDIDA190/1 (ABBA# B 816002) { (+)JDH MADISON DE MANSO 737/4
MISS LL RHA ELY MANSO 620/8 { (+)MR. V8 202/3
{ +JDH LADY REM J MANSO 2 692/3
{ +MR. V8 900/4
{ +MISS V8 843/4

DAM +MISS V8 980/5 (ABBA# C 802901) { JDH MR. MANSO 288/1
{ MIS HCC 612/6 { (+)JDH DAKOTA MANSO 599
{ =JDH LDY OLGA DE MANSO 537/7
{ MR. V8 310/4
{ MISS HCC 274/3

MR. BER 272 is a stylish, attractive, and long-fronted bull that consistently adds eye appeal and quality to his daughters. He is out of the great +MISS V8 980/5, one of the most influential females in the breed, giving him a powerful and proven maternal foundation. In the show ring, MR. BER 272 was a standout, earning championships at the All American, Texas Junior State Show, and Kickoff Classic Show. More importantly, he has proven himself where it matters most — in production. He is one of the most consistent and reliable sires on the ranch and is the sire of +MR. BER CASH 336 and MISS BER 386 "GRETA," both influential and highly regarded in their own right.

MR. BER 272 is being used in breeding programs around the world, a true testament to the value and consistency of his genetics. He is also noted for his excellent pigment and the uniformity he stamps on his offspring. His calves have been standouts in our show string, and they are among the thickest, easiest-keeping calves we have year after year.

Bulls Eye Ranch has sold his genetics around the globe, and all of our customers have been extremely pleased with the results they are seeing in their herds. Do not miss out on this foundational sire to add performance to your herd.



MR BER ROOSEVELT 706



**SIRE OF THE 2024 INTERNATIONAL CALF CHAMPION
CO-OWNED WITH 4R RANCH**

CO-OWNED WITH 4R RANCH

As of 2026, MR BER ROOSEVELT 706 ranks in the top 1% of the breed for Fat Thickness and the top 30% for Calving Ease Maternal and the \$Queen Index



+MR BER TRUMP 427

SIRE **+MR BER 427 Trump**
(ABBA# B 945942)

{ **+#JADT MEXICANO TE 307/9**
{ **+JDH GOUDEAU MANSO 130/0**

{ **(+)JDH SIR LAWFORD MANSO 616/6**
{ **(JADL PENELOPE TE) 57/3**
{ **JDH MR MANSO 19/5**
{ **JDH LADY MANSO 978/1**

DAM **MISS BER 450**
(ABBA# C 947055)

{ **+MR. BER CASH 336**
{ **+MISS BER PRINCESS 277**

{ **MR. BER 272**
{ **+JDH LADY ROSA MANSO 845/7**
{ **MR. V8 363/6**
{ **+MISS BER 218**

MR BER ROOSEVELT 706 is sired by +MR. BER 427 TRUMP and out of MISS BER 450, a daughter of +MR. BER CASH 336—stacking two proven, influential sires in one powerful pedigree. Both TRUMP and CASH have produced calves that have excelled in carcass contests, adding real-world performance credibility to MR BER ROOSEVELT 706's genetic package.

MR BER ROOSEVELT 706 was the high-scanning animal at the 2021 All American, which was the largest All American event ABBA and the AJBA had ever hosted—an achievement that further validates his performance and genetic potential. He has been a favorite at Bulls Eye Ranch since the day he was born, and for good reason. He is currently co-owned with 4R Ranch.

He is long-bodied, stylish, and bold-featured, with tremendous bone, volume, and an abundance of muscle. MR BER ROOSEVELT 706 also carries the strong pigment we all appreciate, giving him the ability to produce both red and gray Brahmans.

We welcomed his first calves in the Spring of 2023, and those early indicators were extremely encouraging, as he produced an ABBA International Division Champion from his very first calf crop. Notably, Roosevelt began producing semen at an early age, making fertility another standout trait in his already impressive profile.



Miss BER 450



MR BER JAMES MONROE 723



**CO-OWNED WITH
RIO RANCH**

As of 2026, MR BER JAMES MONROE 723 ranks in the top 5% of the breed for Fat Thickness, 35% for Birth Weight and 20% for Frame Score



***ANLDSPR WISKY FIV 269/5**

SIRE *ANLDSPR WISKY FIV 269/5
(ABBA# B 960454)

{ (+)JDH SIR LAWFORD MANSO 616/6
(LCH PATTY T.E. 16/03)

{ (+)JDH MADISON DE MANSO 737/4
JDH LADY BARA MANSO 162/5
{ (+) JDH KARU MANSO 800
(JERS - 69 TE)

DAM +JDH GOUDEAU MANSO 130/0
(ABBA# C 892640)

{ JDH MR MANSO 19/5
JDH LADY MANSO 978/1

{ (+)JDH ATLAS MANSO 328/3
{ +JDH LADY MANSO 367/3
{ (-)JDH WINCHESTER MANSO 36/1
JDH LADY MANSO 514/8F



+JDH GOUDEAU MANSO 130/0

MR. BER JAMES MONROE 723 is a powerful young herdsire backed by one of the most elite cow families in the Brahman breed. He is out of our #1 donor cow, +JDH Goudeau Manso 130/0, who ranks at the TOP of the ABBA's Gray Female Register of Renown list—a pedigree that instantly places him among rare company.

MR. BER JAMES MONROE 723 has already proven himself in the show ring, winning numerous championships for Bulls Eye Ranch, including an important Reserve Division Championship at the ABBA International show during HLS&R, and he has done so while also proving his fertility and early maturity. He passed his breeding soundness exam at just 18 months of age and began freezing semen at 22 months, demonstrating both reproductive soundness and early development.

We began having calves by JAMES MONROE at BER in the spring of 2023, and he continues to validate our confidence in his genetic potential. Rio Ranch, who co-owns JAMES MONROE with us is extremely pleased with the performance of his progeny.

He is sired by one of our all-time favorite bulls, ANLDSPR WISKY FIV 269/5, a proven Lawford son known for producing quality, balance, and correctness. Phenotypically, James Monroe is a very clean-made bull with tremendous depth of body and an excellent topline. He is especially valuable as a corrective sire—if you need to clean up sheath design or improve front-end structure, this is the bull to use.



Bulls Eye Ranch

+ MR. V8 846/5



2003 INTERNATIONAL RESERVE GRAND CHAMPION • 2005 INTERNATIONAL GRAND CHAMPION

Our 1st Herd Sire

The Rock

SIRE

+JDH GOTHAM MANSO 39/6
(ABBA# B 76403B)

(-) JDH REMINGTON MANSO 784/2
JDH LADY SANTOS MANSO 566/4

DAM

+MISS V8 653/5
(ABBA# C 780674)

JDH MR. MANSO 288/1
-MISS V8 983/3

-JK SUGAR CRATA 45
JDH PHODID MANSO 119/2
-JJ DIDOR CRATA 500
JDH MISS SAMMIE MANSO 56 856/2
(-) JDH DAKOTA MANSO 599
-JDH LDY OLGA DE MANSO 537/7
JDH SIR JULIO MANSO 835/3
MS V8 735/2

The Rock was one of the most consistent winners of the 2003–2005 show seasons and has proven to be an extremely powerful sire. He produced the 2008 ABBA Premier Show Cow of the Year, Miss BER 218, the high-selling bull of Australia's 2009 Brahman Week Sale for Tony Brown of Pioneer Park, along with many other standout Brahman cattle worldwide.

Blending JDH and V8 bloodlines with an outcross to Powerstroke and Superstroke, Rock offers value to virtually any breeding program. He consistently transmits muscle shape, style, body length, structural soundness, and a tight sheath, making him an easy choice for a wide range of females.

Rock has also produced several outstanding donor females for the ranch. We collected and flushed him as early as 15 months of age, and TransOva described his semen quality as some of the best Brahman semen they had ever evaluated. Rock remains in use at BER today and around the globe, a testament to his long-term genetic value.